

# Open End Rivets

Non-structural blind breakstem rivet designed for a wide range of applications. Available in a variety of materials and combinations.



## Key features and benefits

- Cost effective standard rivet
- Installed quickly and easily
- Design of the stem head ensures positive retention after installation

## Specifications

Sizes:

3/32" – 1/4"

(2.4 mm – 6.4 mm)

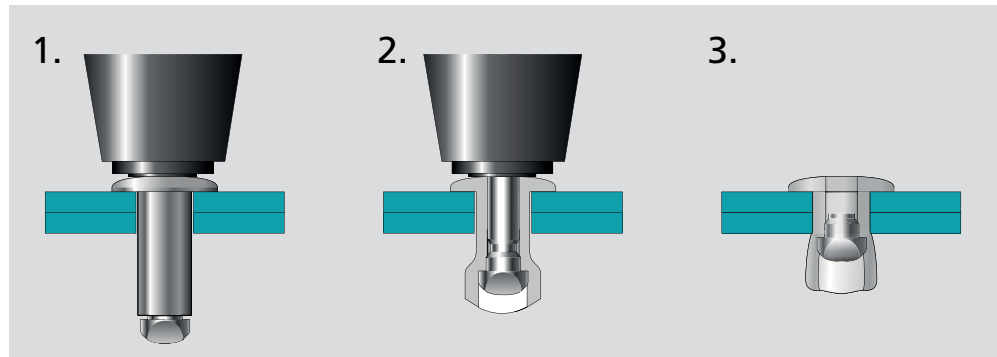
Materials:

Aluminum, Steel,  
Stainless Steel, Copper,  
Nickel Copper Alloy

Head Styles:

Dome, Large Flange,  
Countersunk

## Typical placing sequence



Please visit our website for fastener placing animations and technical data.

## Assembly applications

- White goods
- Automotive
- Building & construction
- Furniture
- Lighting
- Hearth, grill
- Patio furniture
- Renewable energies

Automotive



White goods



Snowmobile trailer



Lighting equipment



Conference room furnishings



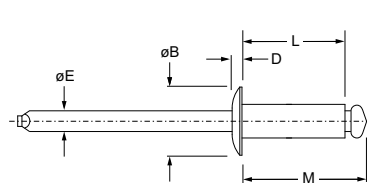
Gutter



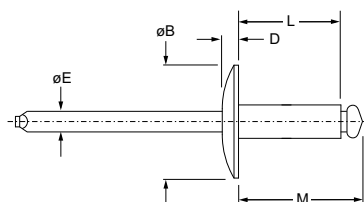


English	Français	Deutsch	Italiano	Español
Body: Aluminum* Natural	Corps: Aluminium* Brut	Hülse: Aluminium* Unbehandelt	Corpo: Alluminio* Nessuna finitura	Cuerpo: Aluminio* Natural
Body: Aluminum Natural	Corps: Aluminium Brut	Hülse: Aluminium Unbehandelt	Corpo: Alluminio Nessuna finitura	Cuerpo: Aluminio Natural

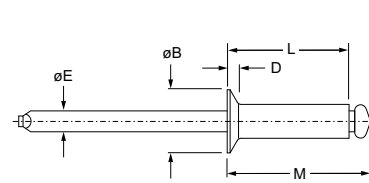
\*: 5052



**AD ■ ABS**  
Dome head  
Tête bombée / Flachrundkopf /  
Testa tonda / Cabeza alomada



**AD ■ ABS LF**  
Large flange  
Tête large / Flachrundkopf, extragroß /  
Testa larga / Cabeza ancha



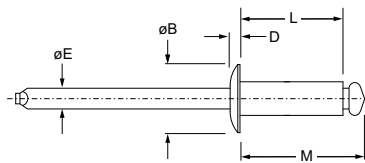
**AK ■ ABS**  
Countersunk  
Tête fraisée / Senkkopf /  
Testa svasata / Cabeza avellanada

Ø nom.	min. max.		min. max.		L ref.	M ref.	ØE ref.	AD ■ ABS			AD ■ ABS LF			AK ■ ABS		
								ØB max.	D max.	Part No. ■	ØB max.	D max.	Part No. ■	ØB max.	D max.	Part No. ■
3/32" (2.4)	.032 (0.8)	.125 (3.2)	.097 (2.46)	.100 (2.54)	.225 (5.7)	.325 (8.3)	.057 (1.5)	.198 (5.1)	.032 (0.9)	32						
	.126 (3.2)	.250 (6.4)			.350 (8.9)	.450 (11.4)				34						
	.251 (6.4)	.375 (9.5)			.475 (12.1)	.575 (14.6)				36						
1/8" (3.2)	.032 (0.8)	.062 (1.6)	.129 (3.28)	.133 (3.38)	.188 (4.8)	.308 (7.8)	.076 (1.9)	.262 (6.7)	.040 (1.1)	41	.390 (10.0)	.046 (1.2)		.233 (6.0)	.051 (1.3)	
	.063 (1.6)	.125 (3.2)			.250 (6.4)	.370 (9.4)				42						
	.126 (3.2)	.187 (4.8)			.313 (8.0)	.433 (11.0)				43						
	.188 (4.8)	.250 (6.4)			.375 (9.5)	.495 (12.6)				44						
	.251 (6.4)	.312 (7.9)			.438 (11.1)	.558 (14.2)				45						
	.313 (7.9)	.375 (9.5)			.500 (12.7)	.620 (15.7)				46						
	.376 (9.5)	.500 (12.7)			.625 (15.9)	.745 (18.9)				48						
	.501 (12.7)	.625 (15.9)			.750 (19.1)	.870 (22.1)				410						

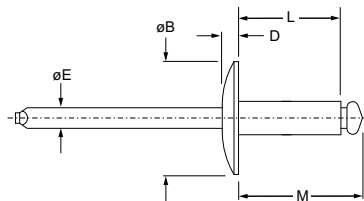
dimensions in inches and (mm) / en pouces et (millimètre) / alle Maße in Zoll und (mm) / in pollici e (millimetri) / en pulgadas y (milímetros)

# Open End AD ABS / AK ABS Series

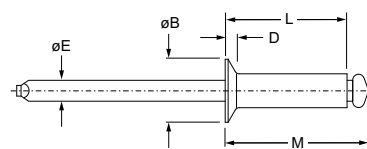
## Aluminum / Aluminum



**AD ■ ABS**  
Dome head  
Tête bombée / Flachrundkopf /  
Testa tonda / Cabeza alomada



**AD ■ ABS LF**  
Large flange  
Tête large / Flachrundkopf, extragroß /  
Testa larga / Cabeza ancha



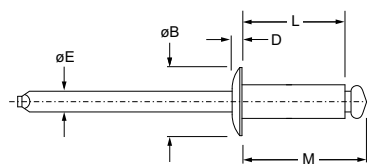
**AK ■ ABS**  
Countersunk  
Tête fraisée / Senkkopf /  
Testa svasata / Cabeza avellanada

Ø nom.	min. max.		min. max.		L ref.	M ref.	ØE ref.	AD ■ ABS			AD ■ ABS LF			AK ■ ABS		
	min.	max.	min.	max.				ØB max.	D max.	Part No. ■	ØB max.	D max.	Part No. ■	ØB max.	D max.	Part No. ■
5/32" (4.0)	.063 (1.6)	.125 (3.2)	.160 (4.06)	.164 (4.17)	.275 (7.0)	.415 (10.5)	.095 (2.4)	.328 (8.4)	.047 (1.2)	52	.488 (12.4)	.056 (1.5)				
	.126 (3.2)	.187 (4.8)			.338 (8.6)	.478 (12.1)				53						
	.188 (4.8)	.250 (6.4)			.400 (10.2)	.540 (13.7)				54			54			
	.251 (6.4)	.375 (9.5)			.525 (13.3)	.665 (16.9)				56			56			
	.376 (9.5)	.500 (12.7)			.650 (16.5)	.790 (20.1)				58			58			
3/16" (4.8)	.063 (1.6)	.125 (3.2)	.192 (4.88)	.196 (4.98)	.300 (7.6)	.460 (11.7)	.114 (2.9)	.393 (10.0)	.055 (1.4)	62	.650 (16.6)	.083 (2.2)				
	.126 (3.2)	.250 (6.4)			.425 (10.8)	.585 (14.9)				64			64			
	.251 (6.4)	.375 (9.5)			.550 (14.0)	.710 (18.0)				66			66			
	.376 (9.5)	.500 (12.7)			.675 (17.2)	.835 (21.2)				68			68			
	.501 (12.7)	.625 (15.9)			.800 (20.3)	.960 (24.4)				610			610			
	.626 (15.9)	.750 (19.1)			.925 (23.5)	1.085 (27.6)				612			612			
	.751 (19.1)	.875 (22.2)			1.050 (26.7)	1.210 (30.7)				614						
	.876 (22.3)	1.000 (25.4)			1.175 (29.8)	1.335 (33.9)				616			616			

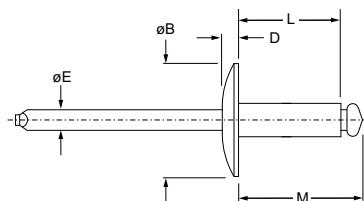
dimensions in inches and (mm) / en pouces et (millimètre) / alle Maße in Zoll und (mm) / in pollici e (millimetri) / en pulgadas y (milímetros)

# Open End AD ABS / AK ABS Series

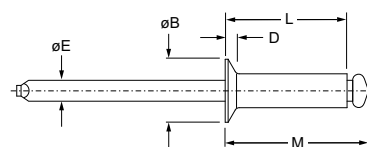
## Aluminum / Aluminum



**AD ■ ABS**  
Dome head  
Tête bombée / Flachrundkopf /  
Testa tonda / Cabeza alomada



**AD ■ ABS LF**  
Large flange  
Tête large / Flachrundkopf, extragroß /  
Testa larga / Cabeza ancha



**AK ■ ABS**  
Countersunk  
Tête fraisée / Senkkopf /  
Testa svasata / Cabeza avellanada

Ø nom.					L ref.	M ref.	ØE ref.	AD ■ ABS			AD ■ ABS LF			AK ■ ABS		
	min.	max.	min.	max.				ØB max.	D max.	Part No. ■	ØB max.	D max.	Part No. ■	ØB max.	D max.	Part No. ■
1/4" (6.4)	.062 (1.6)	.125 (3.2)			.350 (8.9)	.585 (14.9)				82						
	.126 (3.2)	.250 (6.4)			.475 (12.1)	.710 (18.0)				84						
	.251 (6.4)	.375 (9.5)			.600 (15.2)	.835 (21.2)				86						
	.376 (9.5)	.500 (12.7)	.257 (6.53)	.261 (6.63)	.725 (18.4)	.960 (24.4)	.151 (3.8)	.525 (13.4)	.073 (1.85)	88						
	.501 (12.7)	.625 (15.9)			.850 (21.6)	1.085 (27.6)				810						
	.626 (15.9)	.750 (19.1)			.975 (24.8)	1.210 (30.7)				812						
	.876 (22.3)	1.000 (25.4)			1.225 (31.1)	1.460 (37.1)				816						

dimensions in inches and (mm) / en pouces et (millimètre) / alle Maße in Zoll und (mm) / in pollici e (millimetri) / en pulgadas y (milímetros)

Ø		
nom.	lbf (kN) <sup>1)</sup>	lbf (kN) <sup>1)</sup>
3/32" (2.4)	85 (0.38)	135 (0.60)
1/8" (3.2)	155 (0.69)	235 (1.05)
5/32" (4.0)	225 (1.00)	350 (1.56)
3/16" (4.8)	315 (1.40)	500 (2.22)
1/4" (6.4)	600 (2.67)	750 (3.34)

1) typical values / valeurs moyennes / typische Werte / Valori tipici / valores típicos